



PAINTED LADY ~ *VANESSA CARDUI*

LAST OBSERVED – 2019 between May to October.

Vancouver, District of North Vancouver – Seymour Provincial Park and Loutet Park, West Vancouver, Delta – George C. Reifel Bird Sanctuary, Richmond, Surrey, Tsawwassen, Chilliwack, Langley, Coquitlam, Manning Park, Simon Fraser University (Burnaby), Victoria, Tofino – Pacific Rim National Park Reserve, Ucluelet, Nanaimo, Parksville, Hornby Island, Salt Spring Island, Galiano Island, Squamish – Lillooet, Okanagan – Similkameen, Kamloops, Kelowna – Myra Canyon Trestles Trail, Kettle Valley Rail Trail, West Kelowna, North Okanagan, Central Kootenay, East Kootenay – Premier Lake, Courtenay, Colwood, Nelson, Thompson – Nicola, Glacier National Park, Columbia – Shuswap, Strathcona, Riondel

IN FLIGHT – May to October.

Migratory butterfly. Migrate from Southern US and Mexico in the Spring and return south in the Fall.

HABITAT – Open and disturbed areas. Painted Ladies can be found in the deserts of southern British Columbia and on the tundra, as well as in heavily wooded areas

HOST PLANTS – Thistles, borage, composites and mallows.

NECTAR PLANTS – Thistles, giant goldenrods, marigolds and everlasting.



WESTERN TIGER SWALLOWTAIL ~ *PAPILIO RUTULUS*

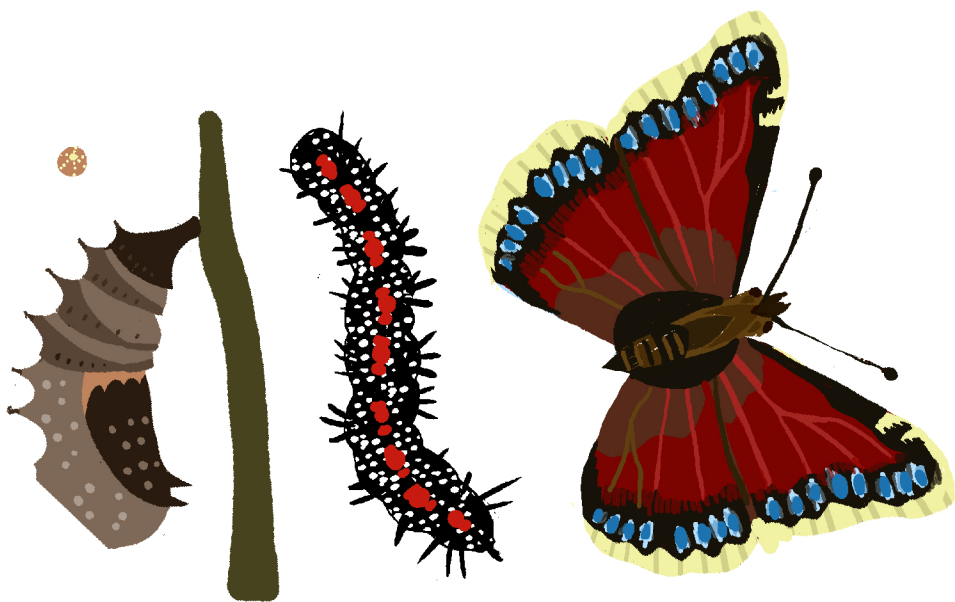
LAST OBSERVED ~ 2019 between May to early September: Vancouver – William Street, Meadow Trail, Southlands, Burrard Street, West Georgia Street, Stanley Park, Richmond – Iona Beach Park, District of North Vancouver – Butterflyway Lane on Bournemouthe Crescent, Capilano River Regional Park, Goat Mountain, Lions Bay, Delta, Tsawwassen, Burnaby, Coquitlam, Langley City, Maple Ridge, Mission, Fraser Valley, Yale, Anmore, Pemberton, Squamish – Lillooet, Okanagan – Similkameen, Okanagan Falls Provincial Park Central Okanagan - Bear Creek Provincial Park, Kelowna, North Okanagan, Penticton, Kamloops, Vernon, Oliver, Fairmont Hot Springs, Strathcona, Courtenay, Comox, Comox Valley, Colwood, Lantzville, Highlands, Allsbrook Trail – Parksville Alberni, Powell River, Sooke, Nanaimo, Cold Stream, Langford, Saanich Trail, Victoria – Rockford, University of Victoria.

IN FLIGHT ~ From May to July, and until August in mid-elevations.

HABITAT ~ Western Tiger Swallowtails are univoltine in BC. Common along the southern edge of BC. They are found wherever their larval food plants occur. Mostly near riparian habitats along streams and rivers. They are also seen in residential neighbourhoods especially where birches, willows and poplars are planted.

HOST PLANTS ~ Willows, poplars, aspen, cottonwood, bittercherry.

NECTAR PLANTS ~ Thistles, butterfly bush, sages, lavender, anise, catmint.



MOURNING CLOAK - NYMPHALIS ANTIOPA

LAST OBSERVED - 2019 between May to October.

Vancouver - Jericho Park, Richmond, District of North Vancouver - Butterflyway Lane, New Westminster, Port Coquitlam, Squamish, Squamish - Lillooet, Fraser Valley, Sunshine Coast, Sechelt, Victoria Cowichan Valley, Colwood, Central Okanagan - Blue Grouse Mountain Kamloops, Vernon, Kelowna, Okanagan - Similkameen, Columbia Lake - East Kootenay, Cariboo, Columbia - Shuswap, Logan Lake, Vanderhoof Thompson - Nicola, Cranbrook, Nelson, Kitimat, Stikine Regional District of Bulkley Nechako, Crawford Bay Regional Park, Wells Gray Park, Monck Provincial Park, Mt. Robson Park, Glacier National Park Nisga'

IN FLIGHT - Mid- March to September

HABITAT - Streamsides, meadows, forest borders, roadsides and gardens. Found all over BC in any elevations. Mourning Cloaks are univoltine in BC.

HOST PLANTS - Willow, ornamental elm, trembling aspen, hawthorn and black cottonwood.

NECTAR PLANTS - Adult butterfly feeds on tree sap, especially Oak and rotten fruit.



PALE SWALLOWTAIL ~ *PAPILIO EURYMEDON*

LAST OBSERVED ~ 2019 between May to late July: District of North Vancouver – Butterflyway Lane on Bournemouth Crescent, Greater Vancouver, Fraser Valley, Skagit Valley, Hope, Yale, Nelson, Manning Park Kelowna, Okanagan – Similkameen, Lantzville, Columbia – Shuswap, Central Kootenay, Kitimat - Stikine, Straight of Georgia, Squamish, Lost Lake Park Whistler, Pemberton, Mayne Island, Comox Valley, Cowichan Valley, Sechelt, Halfmoon Bay, Gibsons, Salt Spring Island, Sechelt, Victoria, Nanaimo, Colwood, Saanich, Powell River, Bowen Island.

IN FLIGHT ~ June and July in Southern British Columbia.

HABITAT ~ Pale Tiger Swallowtails are univoltine in British Columbia. They hibernate on Vancouver Island. Males are often seen mud-puddling. Pale Tiger Swallowtail are seen throughout southern BC in low and mid-elevation forest openings and riparian habitats.

HOST PLANTS ~ Bitter cherry, willow, poplar, red alder, ocean spray and ceanothus (California lilac).

NECTAR PLANTS ~ Bee balm, butterfly weed, parsley, thistle, joe pye weed, sedum, butterfly bushes and sunflower.



CLODIUS PARNASSIAN ~ PARNASSIUS CLODIUS

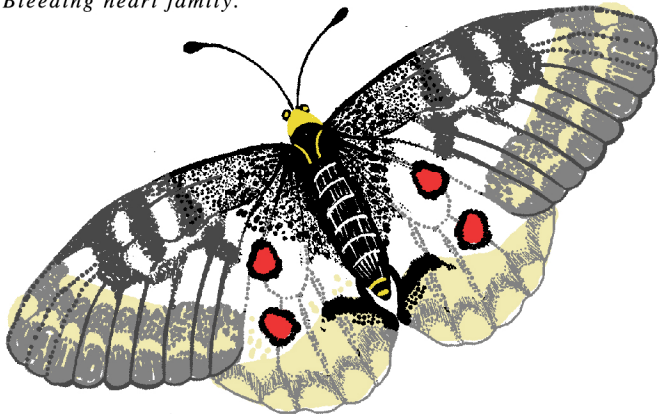
LAST OBSERVED ~ 2019 between June to August: Comox Valley, District of North Vancouver, Mount Washington Alpine Resort, Nanaimo, Rosedale, Yale, Squamish-Lillooet, Whitewater Ski Hill Rd, Fraser Valley, Maple Ridge, Abbotsford, Strathcona.

IN FLIGHT ~ Adults fly from late May at low elevations to early August at high elevations.

HABITAT ~ Forest edge, cool moist mountain and shaded canyons.

HOST PLANTS ~ Western bleeding heart, Pacific bleeding heart.

NECTAR PLANTS ~ Bleeding heart family.





LORQUIN'S ADMIRAL - LIMENITIS LORQUINI

LAST OBSERVED ~ 2019 between May to early September: Brentwood Bay in Delta, Rosedale in Chilliwack, Capilano River Regional Park in North Vancouver, Fraser Valley, Lodge Trail in Coquitlam, Manning Park, Nelson Canyon Park in West Vancouver, Roberts Creek in Sunshine Coast, Sunshine Coast Highway, Salt Spring Island, Squamish – Lillooet Regional District, Saanich Konukson Park in Victoria, Nanaimo Lake in Victoria, Swan Lake and Christmas Hill Nature Sanctuary, Victoria University of Victoria in Victoria, Columbia - Shuswap Central Coast, Central Kootenay, East Kootenay, West Kootenay, Okanagan, Similkameen, Glacier National Park in Columbia-Shuswap, Thompson – Nicola.

IN FLIGHT ~ May to September.

HABITAT ~ Mountain valleys, parks, deciduous woods, lakeshores, streamsides and suburban area.

HOST PLANTS ~ Willows, Hardhack, Chokeberries.

NECTAR PLANTS ~ Astor, yarrow, common milkweed.



MARIPOSA COPPER ~ *LYCAENA MARIPOSA*

LAST OBSERVED ~ 2019 June to September: District of North Vancouver - Mount Seymour Park, Squamish - Lillooet, Central Coast, Garibaldi, Comox Valley, Comox - Strathcona, Okanagan - Similkameen, North Okanagan, East Kootenay, Fraser - Fort George, Nelson - Grohman Creek, Kitimat - Stikine, Regional District of Bulkley Nechako.

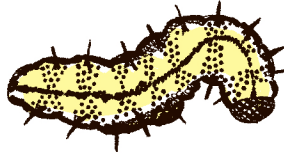
IN FLIGHT ~ Mid-July to August.

HABITAT ~ Mainly a western mountain species, mariposa is widespread throughout British Columbia. It can be encountered at sea level on the coast.

HOST PLANTS ~ Dwarf bilberry and Douglas knotweed.

NECTAR PLANTS ~ Native wild flowers.





WEST COAST LADY ~ VANESSA ANNABELLA

*LAST OBSERVED – 2019 between June – July
Nelson, Central Kootenay, District of North Vancouver – Butterflyway Lane
on Bournemouth Crescent*

IN FLIGHT – May – September

*HABITAT – West Coast Lady shows up in fields, gardens, parks, meadows
and mountain valleys. The West Coast Lady is recognized by its orange bar
on the wing tip. It is a migratory coastal species. Adults hibernate in milder
areas.*

*HOST PLANTS – Stinging nettles, sidelaceas, globemellows, garden
hollyhock and mellowes.*

NECTAR PLANTS – Sage, narrow leaf milkweed,

